



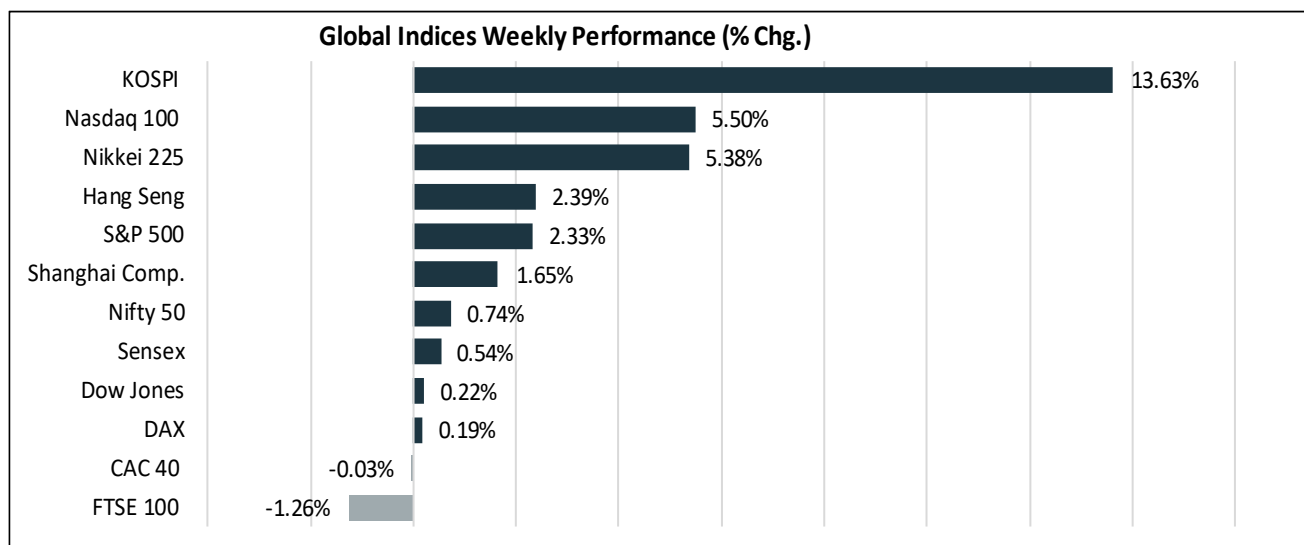
STAT EDGE

Equity Weekly Research Report

9 May 2026

Equity Weekly Research Report

Global Indices Weekly Performance



Market Summary & Outlook:

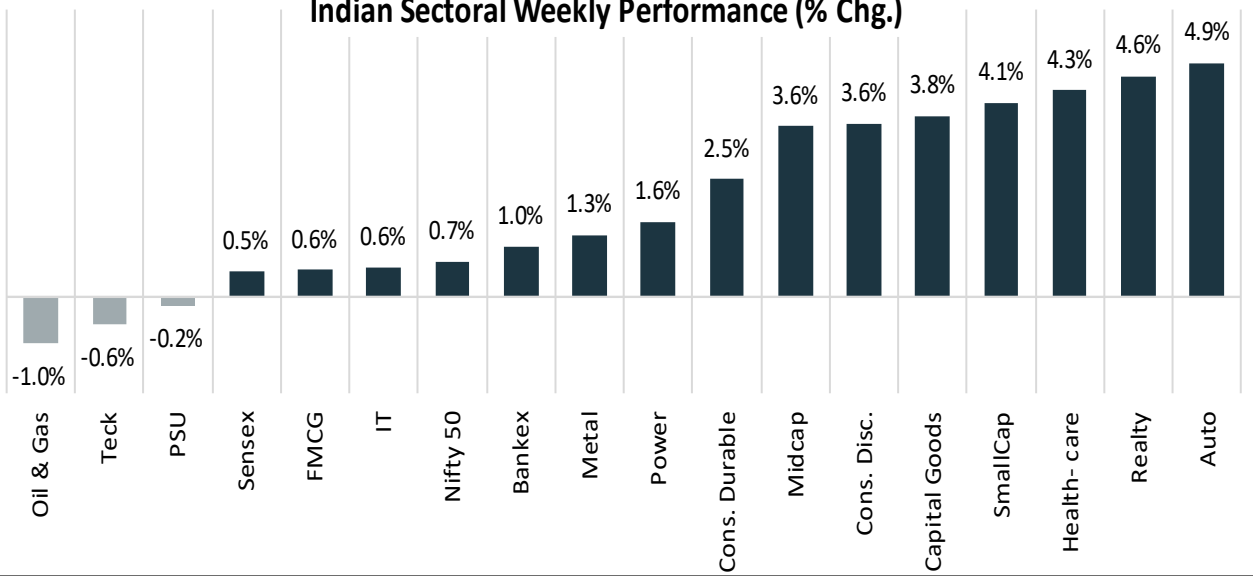
- Global equity markets ended the week generally on positive note, with Asian indices significantly outperforming their Western counterparts as investors balanced strong technology earnings, easing fears of a prolonged US-Iran conflict, and expectations of a less aggressive Federal Reserve policy stance. South Korea's KOSPI emerged as the standout performer, surging 13.63% for the week and extending its record-breaking rally as global investors poured into semiconductor and artificial intelligence-linked stocks. The benchmark index climbed to fresh all-time highs near the 7,500 level, supported by explosive demand for AI memory chips produced by giants such as Samsung Electronics and SK Hynix. Optimism surrounding Korea's technology sector, improved energy-security measures, and strong foreign inflows further reinforced bullish sentiment toward Seoul equities. The Nasdaq 100 advanced 5.50%, while Japan's Nikkei 225 gained 5.38% as investors continued rotating into AI-related stocks and exporters benefiting from resilient global demand.
- In contrast, European equities lagged behind, with the FTSE 100 emerging as the weakest major index of the week, declining 1.26%. London markets were pressured by renewed concerns surrounding the fragile US-Iran ceasefire, rising energy-price volatility, and political uncertainty following disappointing UK local election results for Prime Minister Keir Starmer's Labour Party. While continental European markets such as Germany's DAX (+0.19%) remained relatively stable, broader investor caution limited upside momentum across the region.
- Indian equity markets ended the week marginally higher, with the Nifty 50 rising 0.74% and the Sensex gaining 0.54%, supported by strong corporate earnings and easing crude oil prices. The automobile sector emerged as the top performer after several automakers reported robust March-quarter results, driven by resilient domestic demand, improved margins, and optimism surrounding rural consumption recovery. In contrast, the oil and gas sector underperformed as declining crude prices weighed on upstream energy companies and triggered profit booking across the segment.

Commodity Performance			
Commodity	08-May-26	01-May-26	% Change
Gold Spot \$/Oz	4715.25	4614.21	2.19%
Silver Spot \$/Oz	80.34	75.36	6.61%
WTI Crude Oil Fut	95.42	101.94	-6.40%
Currency Performance			
Currency	08-May-26	01-May-26	% Change
Dollar Index Spot	97.90	98.16	-0.26%
Euro Spot	1.1787	1.1721	0.56%
British Pound Spot	1.3631	1.3583	0.35%
Japanese Yen Spot	156.68	157.01	-0.21%
Chinese Yuan Spot	6.7971	6.831	-0.50%
USDINR	94.48	94.92	-0.46%
EURINR	111.20	110.98	0.20%
GBPINR	128.65	128.15	0.39%

Index	Expiry	Weekly High	Weekly Low	Weekly Close	Weekly % Chg.	Open Interest	Chg. In OI	% Chg. In OI	Volume	Chg. In Volume	% Chg. In Volume
Nifty Fut	May-26	24535	23937	24235	0.57%	262755	28451	12.00%	59877	-35488	-37%
Bank Nifty Fut	May-26	56590	54430	55516	0.58%	77219	10331	15.00%	30080	-1696	-5%
Index	Close	Pivot	Supt.3	Supt.2	Supt.1	Resi.1	Resi.2	Resi.3	10 DMA	20 DMA	RSI
Nifty Fut	24235	24236	23040	23638	23936	24534	24834	25432	24192	24098	52.20
Bank Nifty Fut	55516	55512	51192	53352	54434	56594	57672	59832	56025	56204	48.50

Equity Weekly Research Report

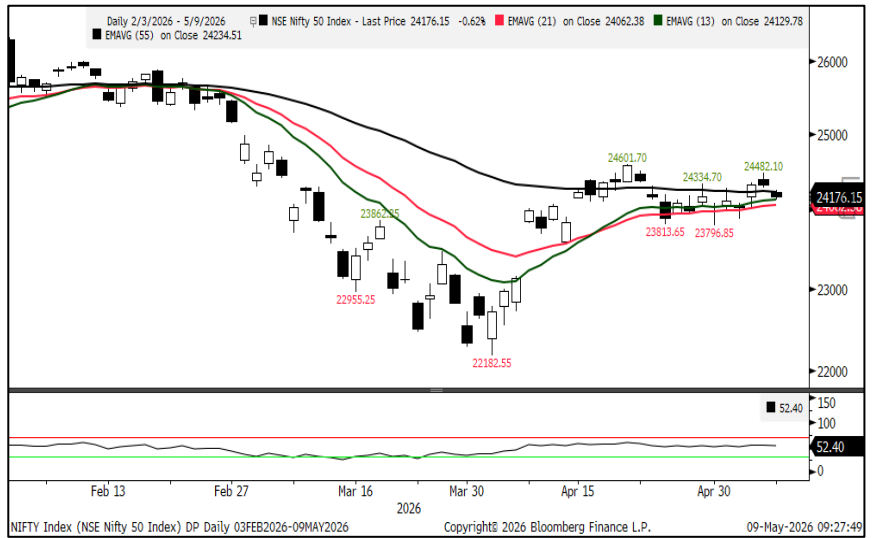
Indian Sectoral Weekly Performance (% Chg.)



Technical Outlooks:

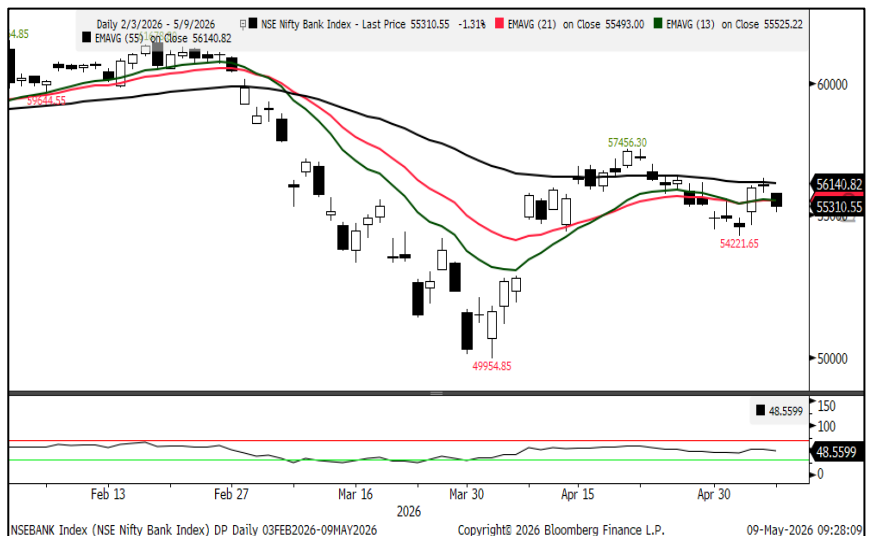
Spot Nifty50 Index View:

- The Nifty50 Index closed at 13 DEMA.
- The RSI is placed around 50, indicating sideways to positive momentum.
- It has been in consolidation zone and swinging around the short-term moving averages.
- **Nifty50 Index: Sideways**
- **Supt. 23800 Resi. 24600**



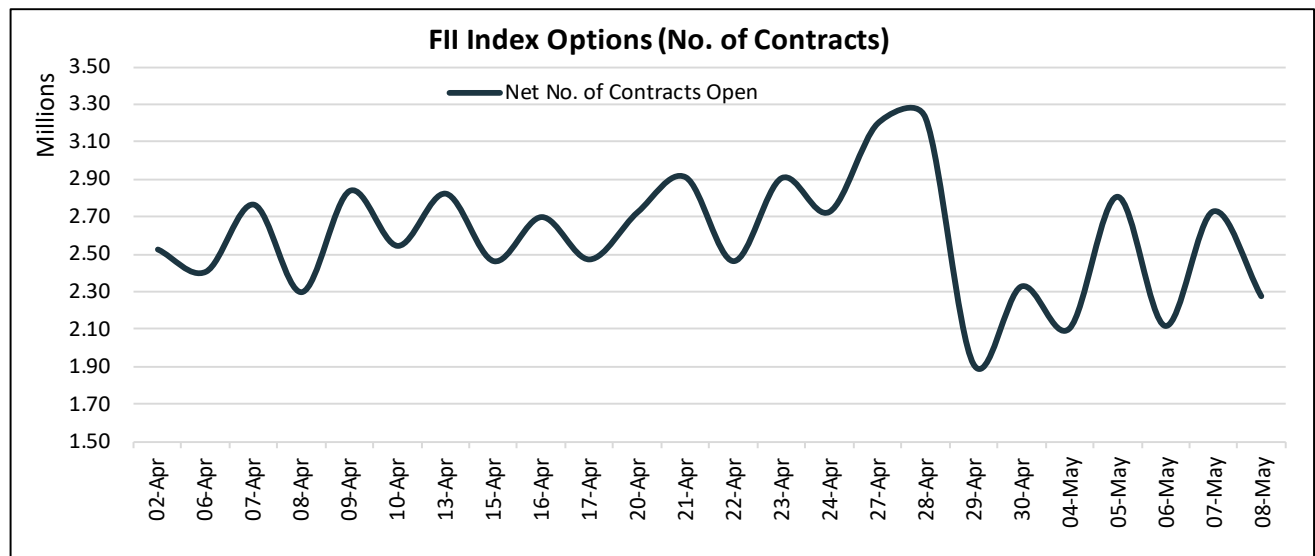
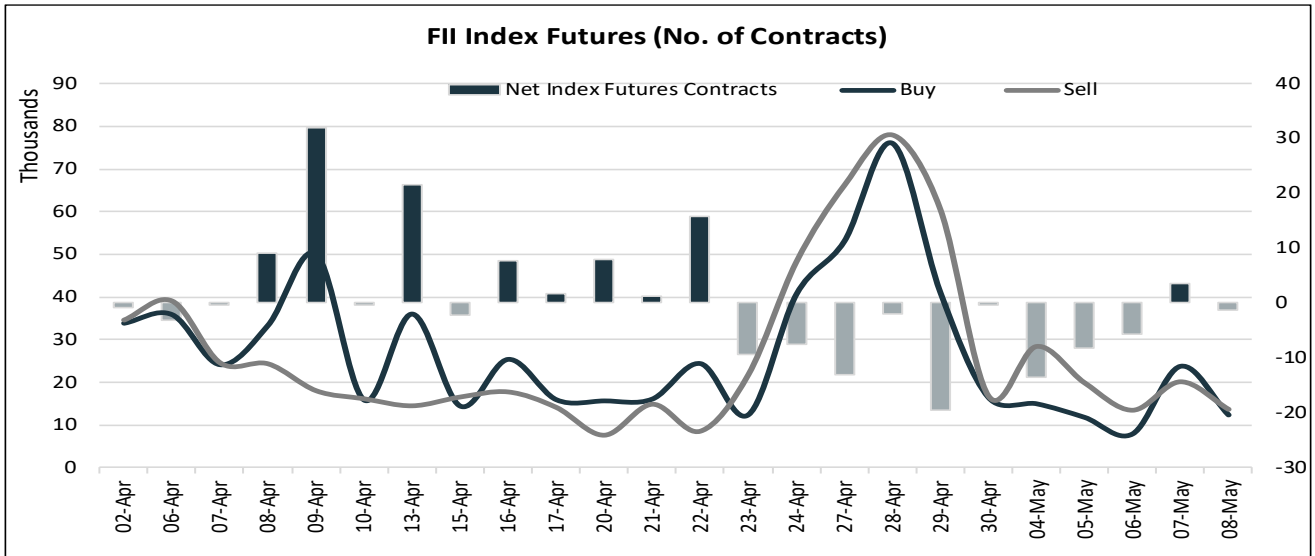
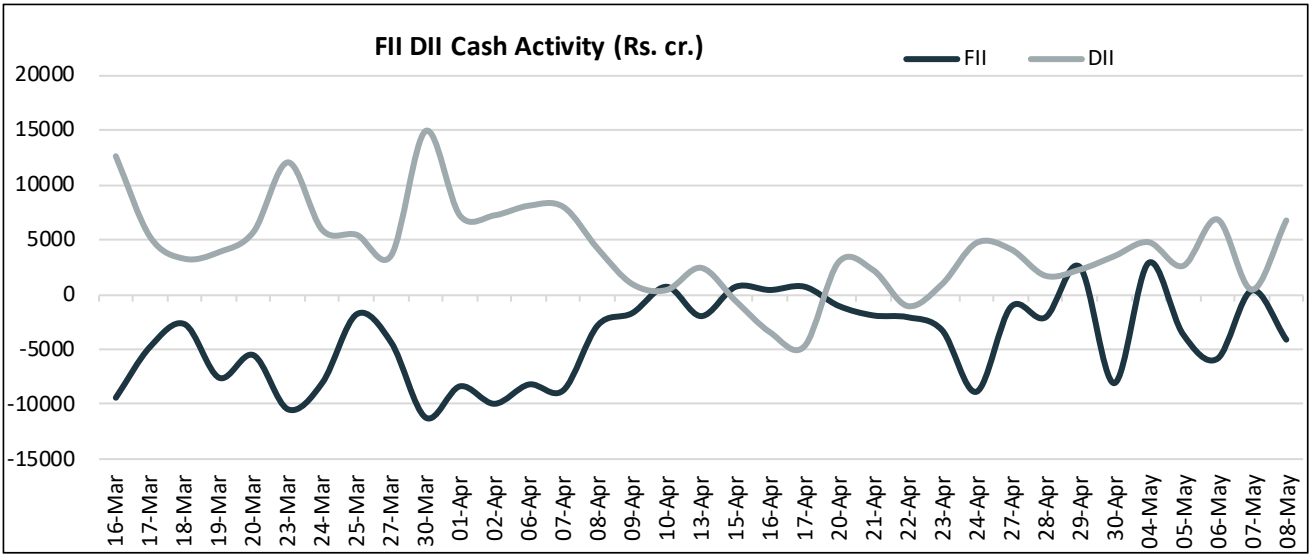
Spot Bank Nifty Index View:

- The Nifty Bank facing resistance at 55 DEMA.
- Daily RSI is placed below 50 and weakening, indicating negative momentum.
- The Index has a gap support around 54400 and resistance at 56300, the 55 DEMA.
- **Bank Nifty: Sideways**
- **Supt. 54200 Resi. 57460**



Equity Weekly Research Report

Institutional Activities



Equity Weekly Research Report

Nifty50 Index Near Month Option Distribution Analysis:

The highest open position has been seen on 25000 Strikes

OI Positions:

Highest: 25000 strikes
81.17 lakh contracts

Major Changes in OI:

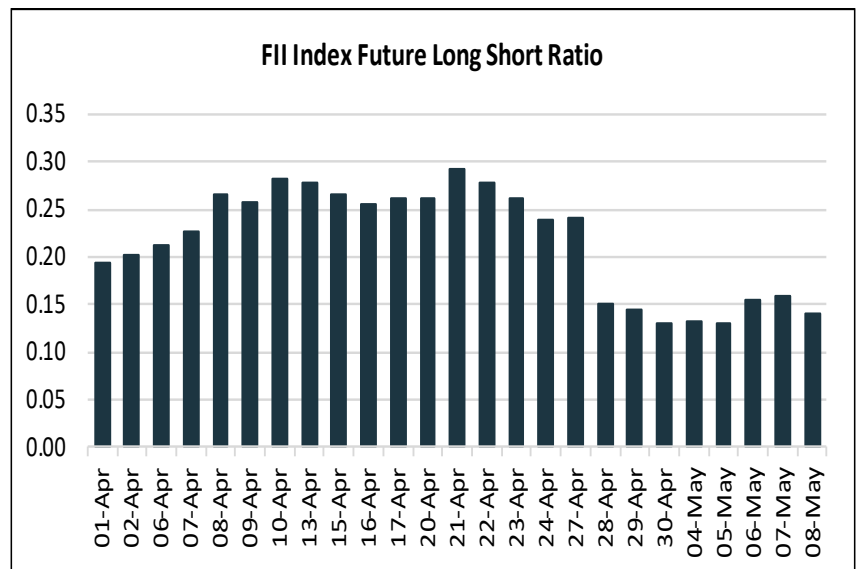
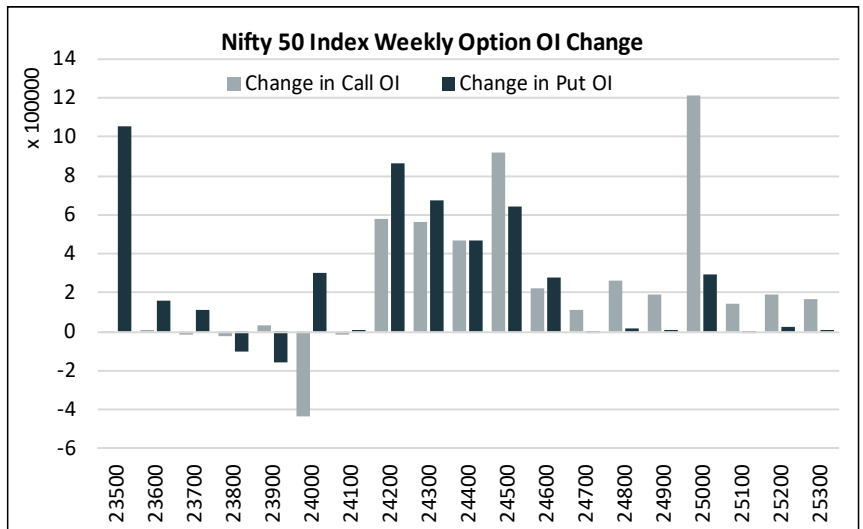
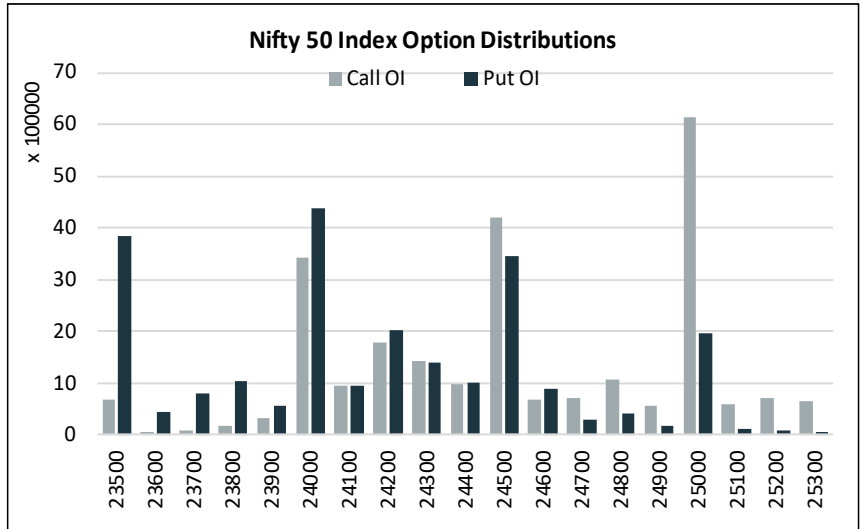
Addition: 25000 CE & 23500 PE

Reduction: 24000 CE & 22000 PE

High Activity by Open Interest:

Addition: 24500 strike

Looking at the above observations, the Nifty50 Index could find support at 23500 and resistance at 25000



FII Index's future long-to-short ratio pegged at 0.14

Equity Weekly Research Report

Economic Calendar						
Date	Time	Country	Event	Period	Survey	Prior
11-May	07:00	China	PPI YoY	Apr	1.80%	0.50%
	07:00	China	CPI YoY	Apr	1.00%	1.00%
	19:30	US	Existing Home Sales	Apr	4.06m	3.98m
12-May	10:30	Japan	Leading Index CI	Mar P	114.3	113.3
	15:30	US	NFIB Small Business Optimism	Apr	96.1	95.8
	16:00	India	CPI YoY	Apr	3.78%	3.40%
	17:45	US	ADP Weekly Employment Change	25-Apr	--	39.250k
	18:00	US	CPI YoY	Apr	3.70%	3.30%
	18:00	US	Core CPI YoY	Apr	2.70%	2.60%
13-May	05:20	Japan	BoP Current Account Balance	Mar	¥3890.7b	¥3932.7b
	14:30	EC	GDP SA YoY	1Q S	0.80%	0.80%
	14:30	EC	Industrial Production WDA YoY	Mar	-1.60%	-0.60%
	14:30	EC	Employment YoY	1Q P	--	0.70%
	16:30	US	MBA Mortgage Applications	08-May	--	-4.40%
14-May	11:30	UK	GDP YoY	1Q P	0.80%	1.00%
	11:30	UK	Monthly GDP (MoM)	Mar	-0.20%	0.50%
	11:30	UK	Industrial Production YoY	Mar	0.30%	-0.40%
	11:30	UK	Manufacturing Production YoY	Mar	0.10%	-0.50%
	11:30	UK	Trade Balance GBP/Mn	Mar	--	-£720m
	12:00	India	Wholesale Prices YoY	Apr	5.50%	3.88%
	18:00	US	Initial Jobless Claims	09-May	205k	200k
	18:00	US	Continuing Claims	02-May	1782k	1766k
	18:00	US	Retail Sales Advance MoM	Apr	0.60%	1.70%
15-May	11:30	Japan	Machine Tool Orders YoY	Apr P	--	28.00%
	18:00	US	Empire Manufacturing	May	7.5	11
	18:45	US	Industrial Production MoM	Apr	0.20%	-0.50%
	18:45	US	Manufacturing (SIC) Production	Apr	0.20%	-0.10%
	18:45	US	Capacity Utilization	Apr	75.80%	75.70%
		India	Trade Balance	Apr	-\$26200m	-\$20674m

Disclaimer:

The information provided does not constitute, in any way, a solicitation or inducement to buy or sell securities and similar products. Comments and analysis reflect the views of STAT EDGE CAPITAL at any given time and are subject to change at any time. Moreover, they cannot constitute a commitment or guarantee from STAT EDGE CAPITAL. The recipient acknowledges and agrees that by their very nature, any investment in a financial instrument is random; therefore, any such investment constitutes a risky investment for which the recipient is solely responsible. It is specified that the past performance of a financial product does not prejudice in any way its future performance. The foreign exchange market and financial derivatives such as futures, CFDs (Contracts for Difference), warrants, turbos, or certificates involve high risk. They require a good level of financial knowledge and experience. STAT EDGE CAPITAL recommends the consultation of a financial professional who would have perfect knowledge of the financial and patrimonial situation of the recipient of this message and would be able to verify that the financial products mentioned are adapted to the said situation and the financial objectives pursued. STAT EDGE CAPITAL recommends reading the "risk factors" section of the prospectus for any financial product mentioned.